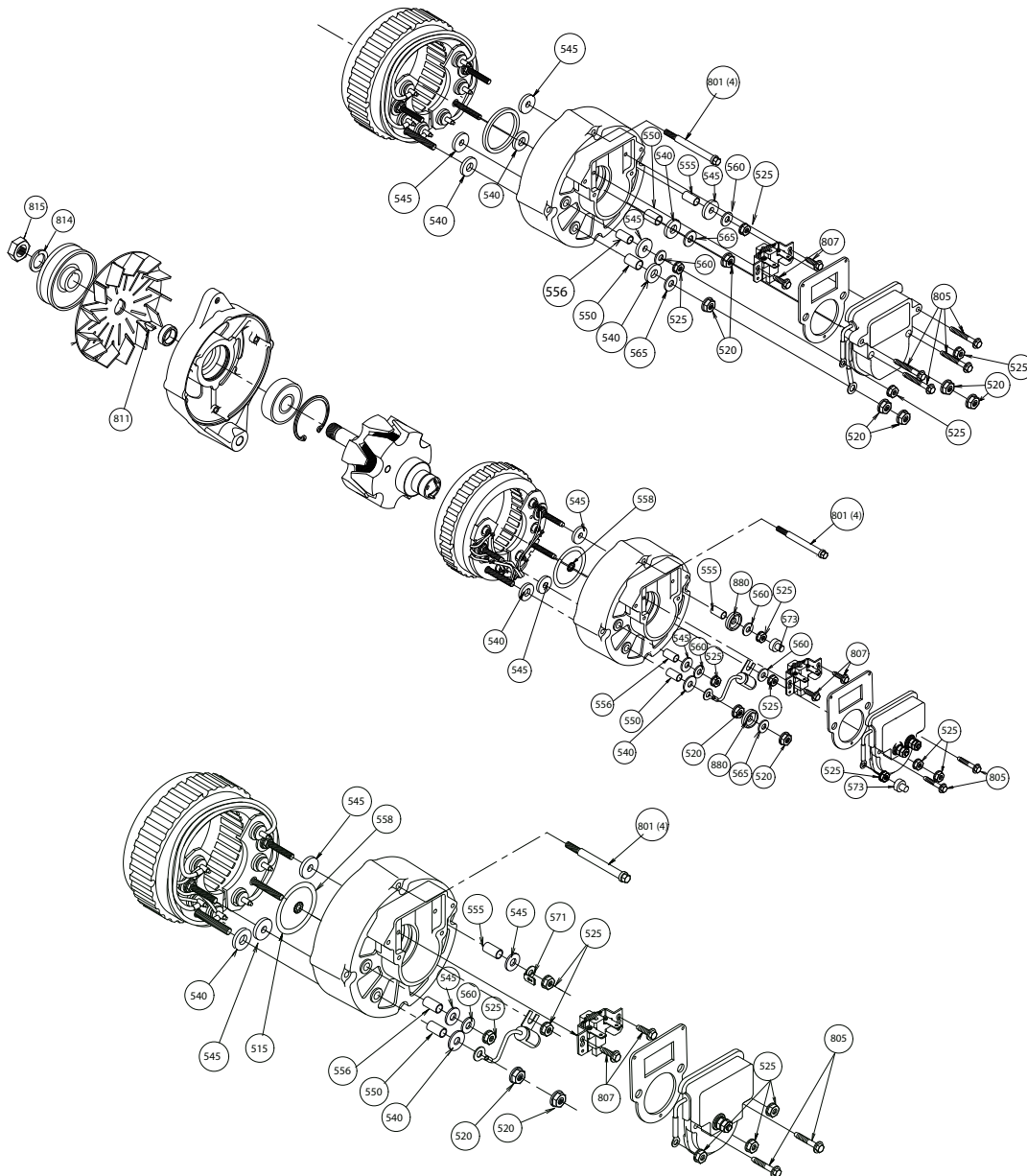


Source: Leece-Neville Heavy Duty Systems Division - Arcade, NY USA  
Date: July 7, 2017  
Bulletin No: TSB-3021  
Models: All 8MR  
Subject: Hardware Kit for 8MR-Series Alternators K2121039845



**Important:** The information contained in this bulletin is intended for use by trained, professional technicians who have the proper tools, equipment, and training to perform the required maintenance described above. This information is NOT intended for 'do-it-yourselfers'; and you should not assume that this information applies to your equipment. If you have any questions regarding this information please visit our website at [www.prestolite.com](http://www.prestolite.com), or contact our technical service department at:

Date: July 7, 2017

Bulletin No: TSB-3021

Key number	Qty	Description	Where used
520	2	NUT CONICAL-M6 X 1.0	Positive stud hardware
520	5	NUT CON LCK 1/4-20	Positive stud hardware
525	6	NUT CON LOCK M5X.8-1/8	D+/ AC stud hardware
525	6	NUT CON LOCK 10-24 3/8	D+/ AC stud hardware
540	4	WSHR INSL 1/4.06THX3/4	Positive stud insulator
545	4	WSHR INSL #10.06THX5/8	Negative stud insulator
550	2	SLEEVE, INSULATING	Positive stud insulator
555	1	INSULATOR SLEEVE	D+/ AC stud insulator
556	1	INSULATOR SLEEVE	D+/ AC stud insulator
558	1	#10 EXT TH LCK-WSHR	
560	3	WASHER FLT.203-.500-.0	D+/ AC stud insulator
565	2	WSHR FLT .266-.562-.	
571	1	1/4 RING TERMINAL #10	Spade terminal
573	2	CAP, STUD	Covers D+/ AC terminals
801	4	BOLT, THRU 10-32 3.28L	Through bolts
801	4	BOLT, THRU-10-32 2.86L	Through bolts
805	2	SCR TPG 8-32X.88 1/4HD	Regulator attaching screws
805	4	SCR TPG 8-32X1.25 1/4H	Regulator attaching screws
805	4	SCR TPG 8-32X.75 1/4HD	Regulator attaching screws
807	2	SCR TPG 8-32X.50 1/4HD	Brush assembly attaching screws
811	1	KEY, WOODRUFF	Shaft woodruff key
814	1	WASHER SPLIT LOCK	Pulley lock nut (METRIC)
814	1	WASHER SPLIT LOCK	Pulley lock nut (SAE)
815	1	NUT SPECIAL	Pulley nut (SAE)
815	1	NUT (HEX) SPCL	Pulley nut (METRIC)
880	2	INSULATOR	Stud insulator

Important: The information contained in this bulletin is intended for use by trained, professional technicians who have the proper tools, equipment, and training to perform the required maintenance described above. This information is NOT intended for 'do-it-yourselfers', and you should not assume that this information applies to your equipment. If you have any questions regarding this information please visit our website at [www.prestolite.com](http://www.prestolite.com), or contact our technical service department at: